

# Plotting and Saving GPS coordinates in Google Earth

**I have exact GPS coordinates**

**I don't have GPS coordinates but I can find the estimate locations on Google Earth**

If you have GPS coordinates already and want to plot them on Google Earth, follow these steps...

Google earth

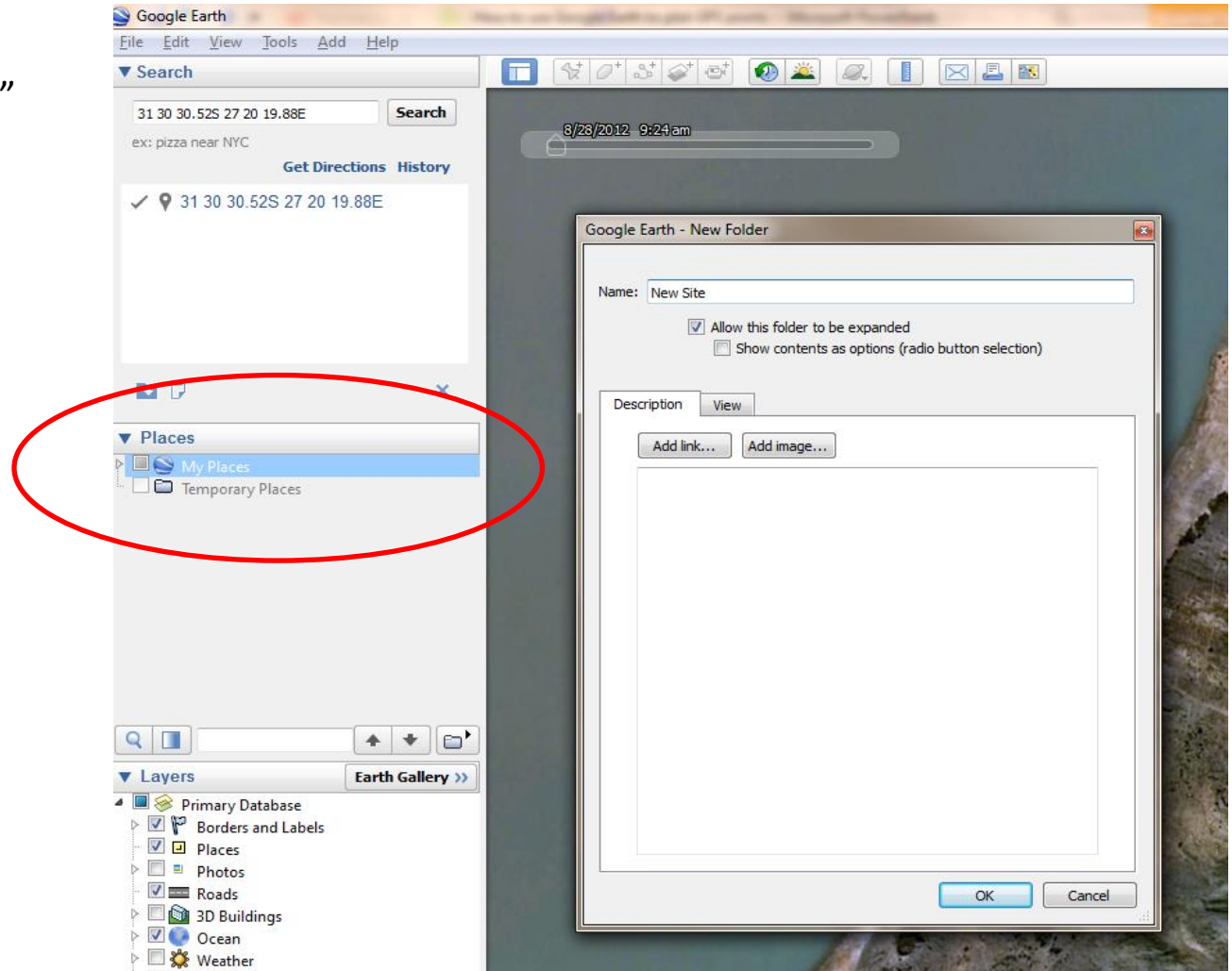


Let's assume you have the following coordinates:

| Station Name | GPS Coordinates                |
|--------------|--------------------------------|
| Station 1    | 31°30'30.52"S<br>27°20'19.88"E |
| Station 2    | 31°28'37.52"S<br>27°21'15.13"E |
| Station 3    | 31°28'43.99"S<br>27°19'40.58"E |

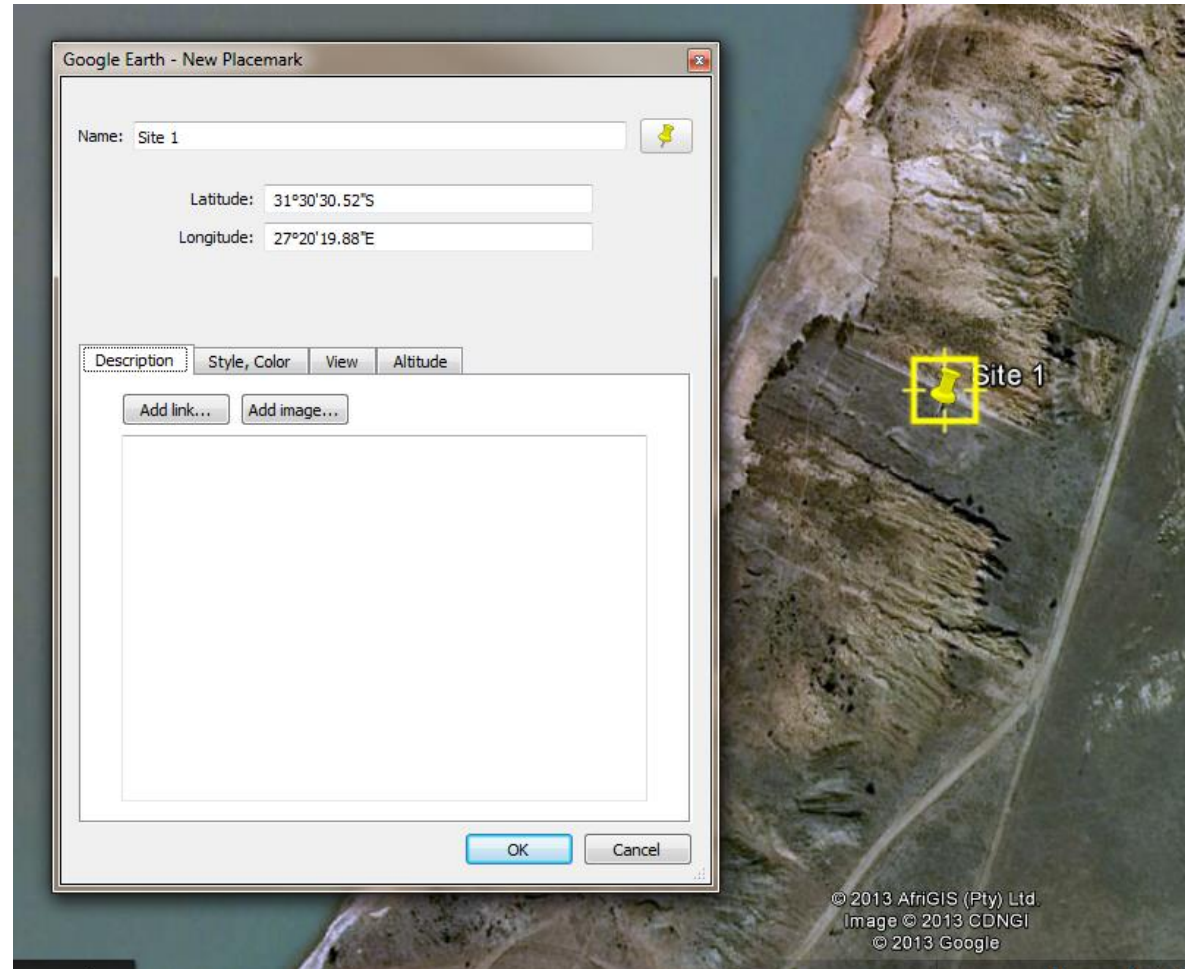
# Step 1: Open Google earth, then create a new Folder with your Project Name. In this example we will call it “New Site”

- Right Click on “My Places” and select “Add Folder”
- Give the folder a name – e.g. New Site
- Click OK

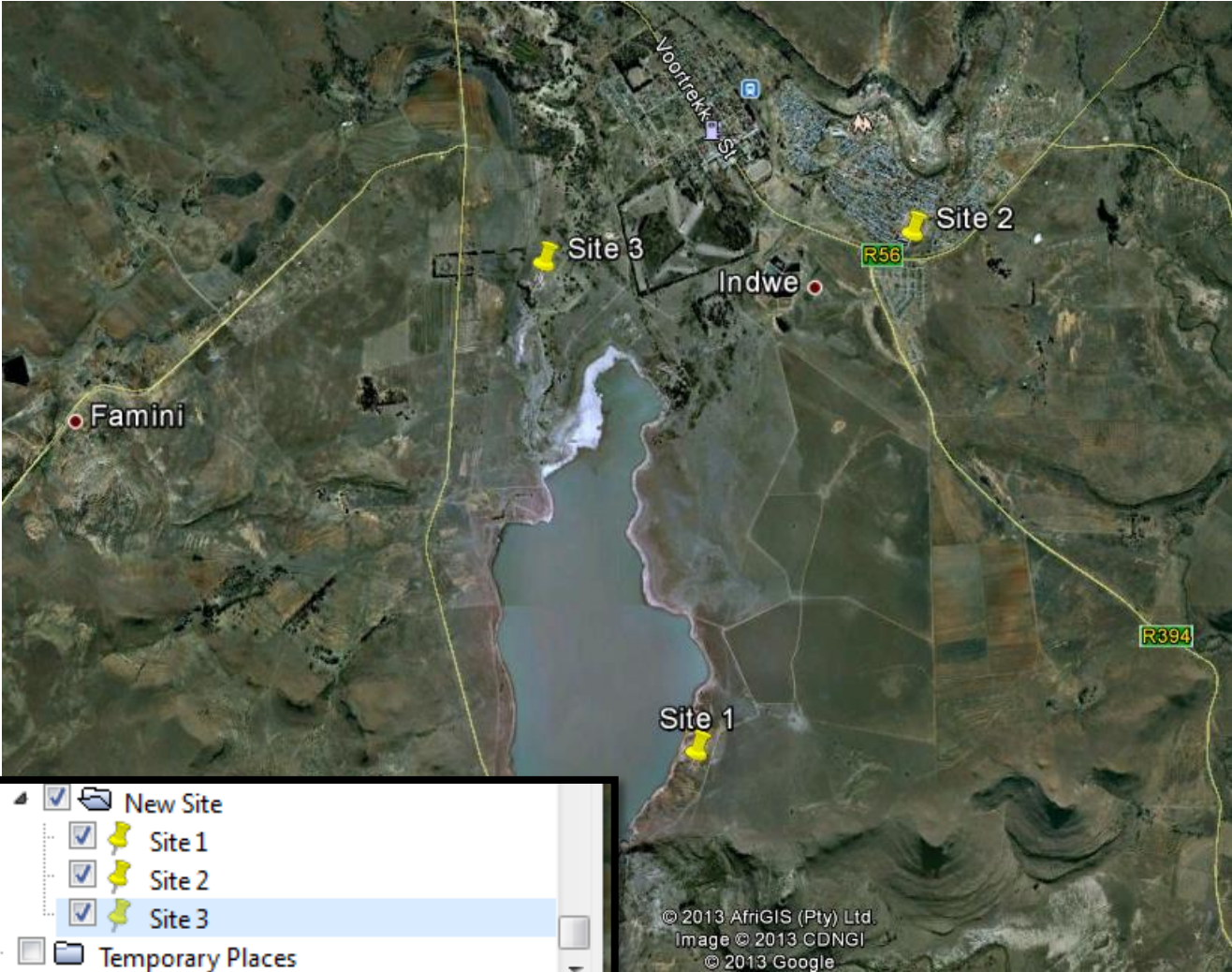


## Step 2: Create a new GPS plot (called placemark) within your project folder

- Right Click on “New Site” (or whatever you called it) and select “Add Placemark”
- Give the placemark a name – e.g. Site 1
- Enter the coordinates for the site (note, can be done without the symbols – use spaces instead)
- E.g. 31°30'30.52"S will be entered as 31 30 30.52S – Google earth should automatically correct it.
- Click OK

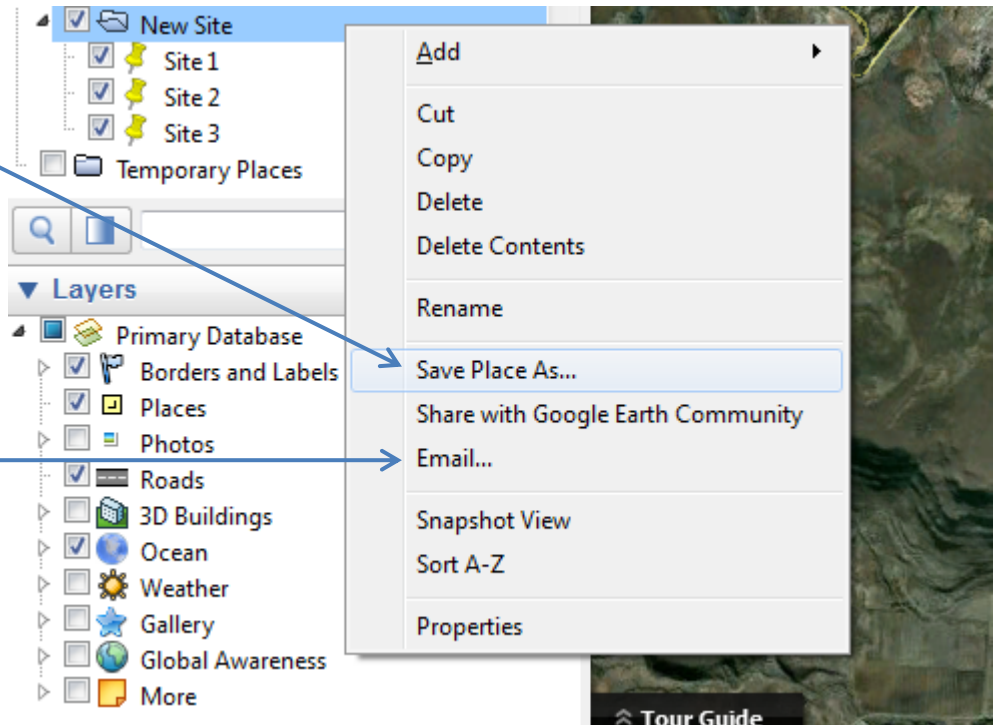


Step 3: Follow the previous step for every new placemark you wish to enter.



## Step 4: Save your coordinates to a file on your computer.

- Right Click on “New Site” (or whatever you called it) and select “Save Place As...”
- Give the File a name or leave as default
- Choose a location on your PC to save this \*.KMZ file
- You can now attach this file to an email and send it.
- It’s also possible to email it directly out of Google Earth



## Step 5: That' it!

[Return to Beginning](#)



If you don't have GPS coordinate but can find the locations on the Google Earth map, follow these steps...

Google earth

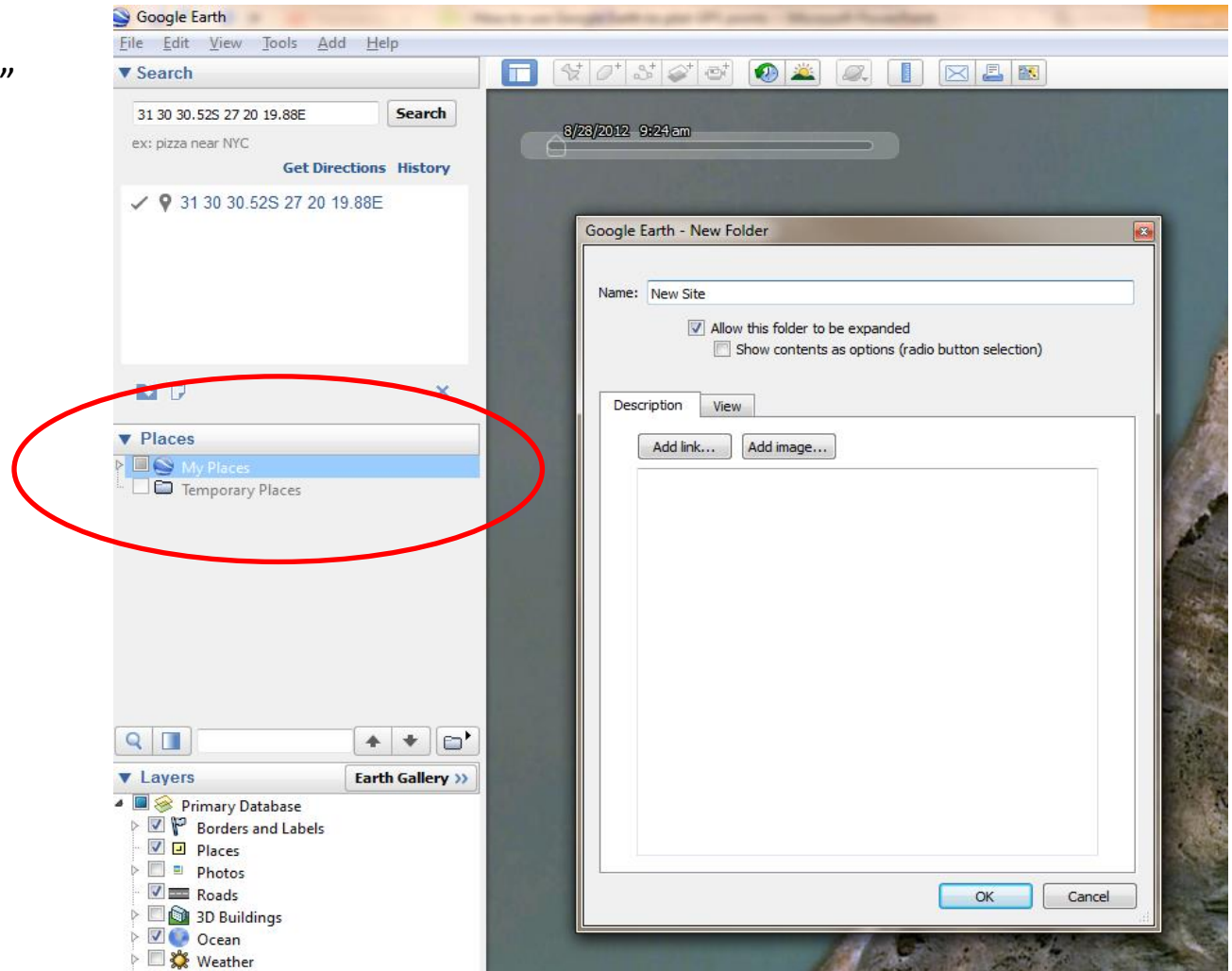


Let's assume you have the following sites:

| Station Name | GPS Coordinates |
|--------------|-----------------|
| Station 1    | ???             |
| Station 2    | ???             |
| Station 3    | ???             |

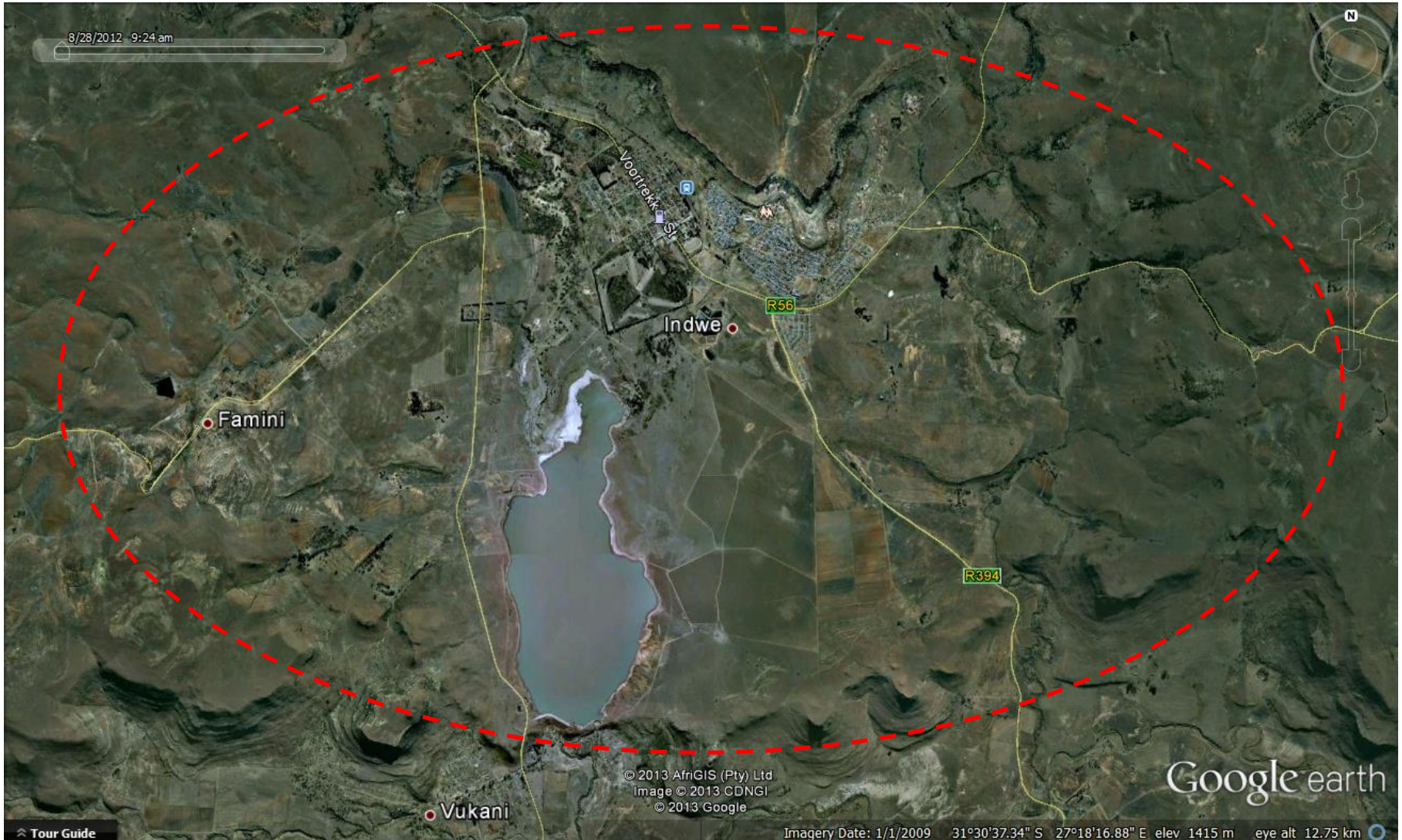
# Step 1: Open Google earth, then create a new Folder with your Project Name. In this example we will call it “New Site”

- Right Click on “My Places” and select “Add Folder”
- Give the folder a name – e.g. New Site
- Click OK



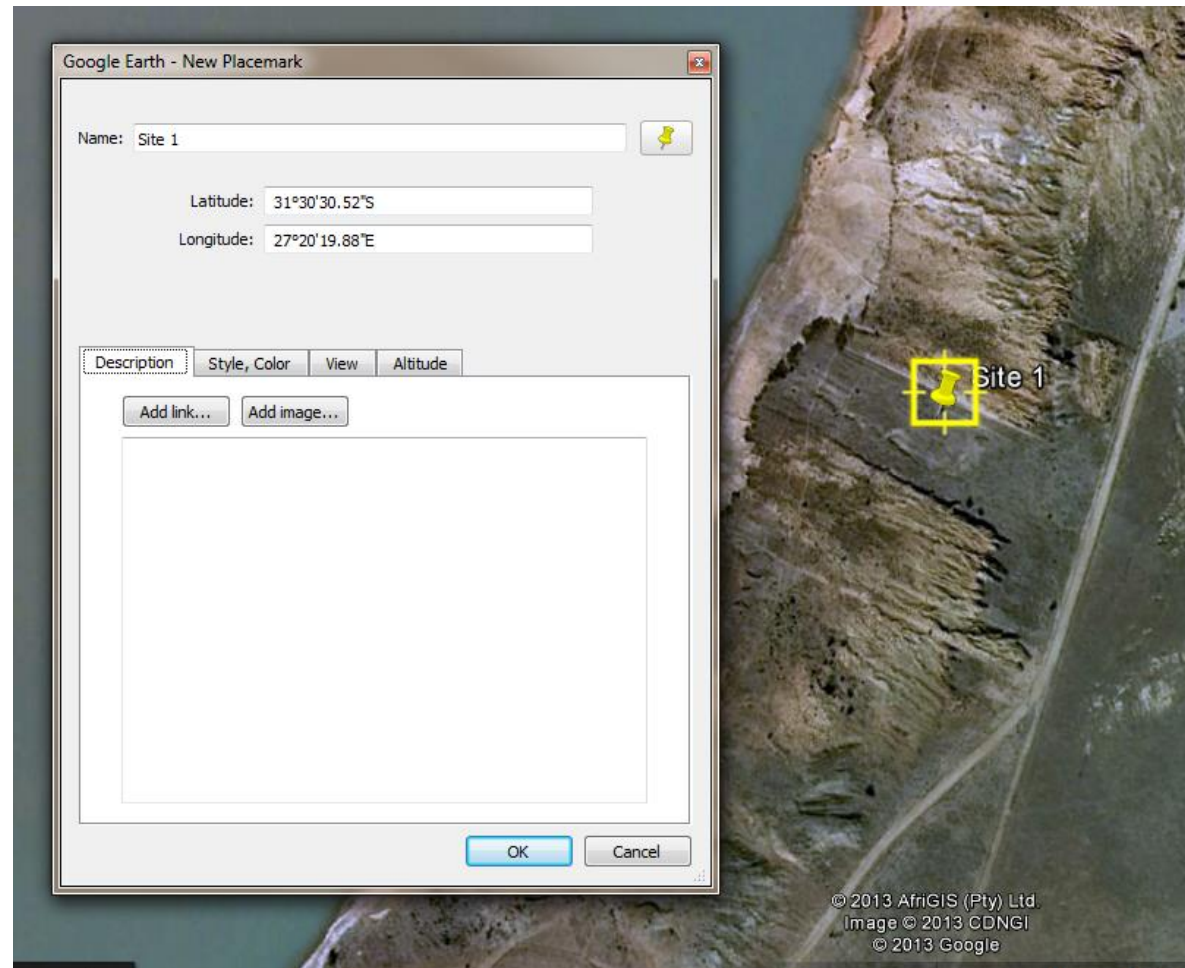
support@tabateq.com

Step 2: Navigate to the area on Google Earth where you can see you sites. E.g.

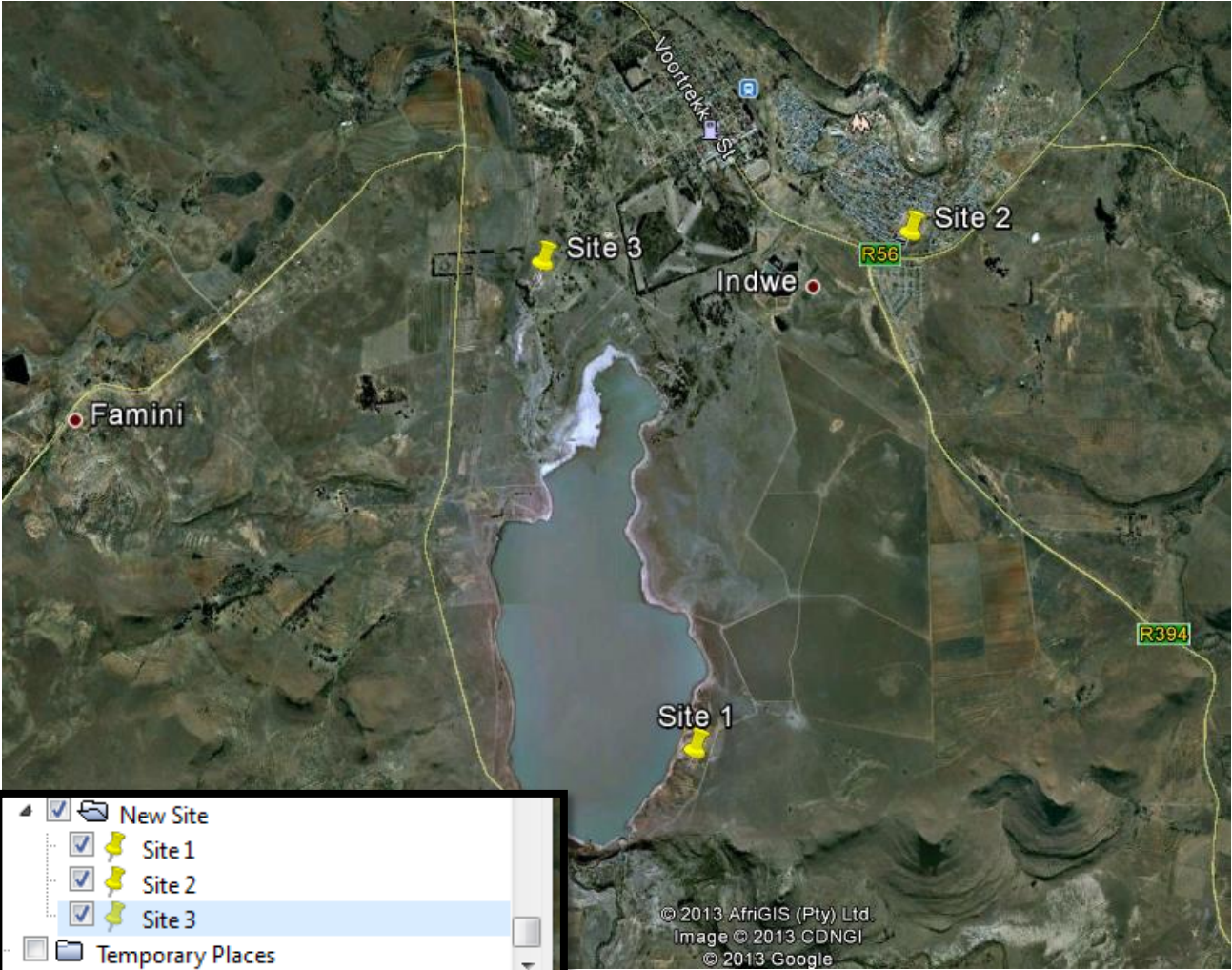


## Step 3: Create a new GPS plot (called placemark) within your project folder

- Right Click on “New Site” (or whatever you called it) and select “Add Placemark”
- Give the placemark a name – e.g. Site 1
- Move (click and hold with mouse) the placemark to your site
- Click OK

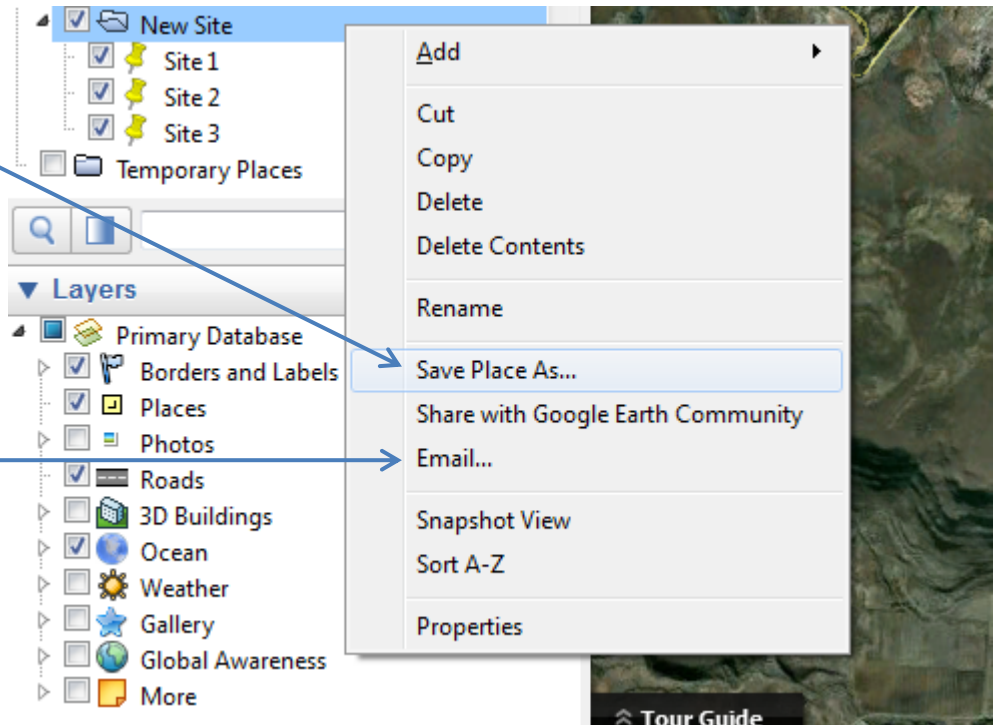


Step 4: Follow the previous step for every new placemark you wish to enter.



## Step 5: Save your coordinates to a file on your computer.

- Right Click on “New Site” (or whatever you called it) and select “Save Place As...”
- Give the File a name or leave as default
- Choose a location on your PC to save this \*.KMZ file
- You can now attach this file to an email and send it.
- It’s also possible to email it directly out of Google Earth



Step 6: That' it!

[Return to Beginning](#)